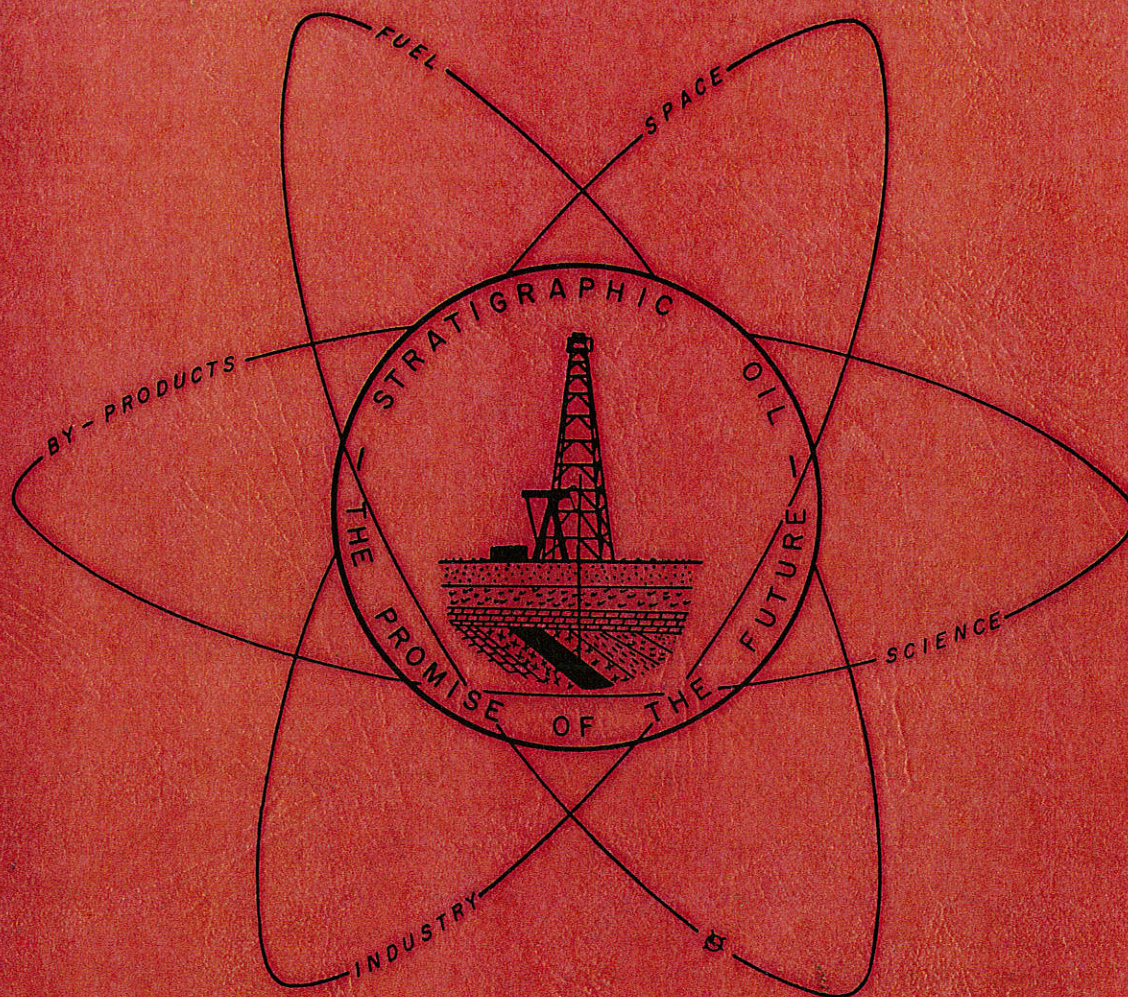


TRANSACTIONS

THE THIRTEENTH ANNUAL CONVENTION



Gulf Coast Association of Geological Societies

LAFAYETTE GEOLOGICAL SOCIETY
LAFAYETTE, LA.

NEW ORLEANS GEOLOGICAL SOCIETY
NEW ORLEANS, LA.

SHREVEPORT GEOLOGICAL SOCIETY
SHREVEPORT, LA.

MISSISSIPPI GEOLOGICAL SOCIETY
JACKSON, MISS.

SOUTHEASTERN GEOLOGICAL SOCIETY
TALLAHASSEE, FLORIDA

BEAUMONT GEOLOGICAL SOCIETY
BEAUMONT, TEXAS

CORPUS CHRISTI GEOLOGICAL SOCIETY
CORPUS CHRISTI, TEXAS

EAST TEXAS GEOLOGICAL SOCIETY
TYLER, TEXAS

HOUSTON GEOLOGICAL SOCIETY
HOUSTON, TEXAS

SOUTH TEXAS GEOLOGICAL SOCIETY
SAN ANTONIO, TEXAS

TRANSACTIONS

Gulf Coast Association Of Geological Societies

VOLUME XIII, 1963

Editors:

**George B. Hickok
Prentis L. Boatner, Jr.**

prepared for the

THIRTEENTH ANNUAL CONVENTION OF G.C.A.G.S.

and the

**1963 FALL REGIONAL MEETING OF THE
AMERICAN ASSOCIATION OF PETROLEUM GEOLOGISTS**

held in co-operation with

**The Gulf Coast Section of the
Society of Economic Paleontologists and Mineralogists**

OCTOBER THIRTIETH through NOVEMBER FIRST, 1963

at

THE CAPTAIN SHREVE HOTEL, SHREVEPORT, LOUISIANA



Published at

Shreveport, Louisiana

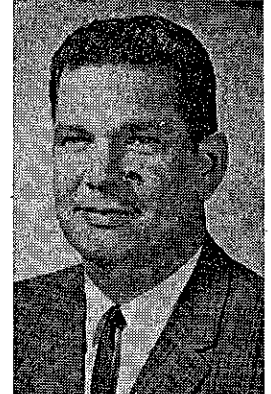
**Copyright 1963 by the Gulf Coast Association of Geological Societies
No reproduction without permission of the President of the G.C.A.G.S.**

BEST PAPER AWARDS 12TH ANNUAL MEETING

Awards for the best papers presented at the G.C.A.G.S. Twelfth Annual Meeting in New Orleans were as follows: First Place—General Geology Category "Subsurface Lower Cretaceous Stratigraphy, Central Texas" by Delos R. Tucker. Second Place—General Geology "Improved Interpretation of Formation Productivity by Combined use of Core Analysis and Electric Log Data" by Raymond J. Granberry and Richard C. Wilshusen. First Place—Regional Study Groups "The Camerina and Cibicides Hazzardi Stratigraphic Intervals of Southwest Louisiana." Lafayette Geological Society Study Group; Chairman, Frank W. Harrison, Jr. First Place—Paleontological Category (tie) "Biostratigraphy of South Central Lafourche Parish, Louisiana" by Gerald C. Glaser, "Application of Marine Ecology in the Gulf Coast Tertiary" by William R. Walton.



DELOS R. TUCKER received his B.S. and M.S. degrees in Geology at Louisiana State University and earned his PhD. at the University of Texas. He is a Professor at Glendale City College, Glendale, California.



R. C. WILSHUSEN was graduated from S.M.U. in Engineering and is currently employed by Core Lab in Corpus Christi, Texas

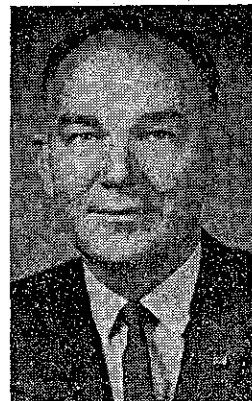


WILLIAM R. WALTON earned his A.B. in Geology at Amherst College and his M.S. and PhD at Harvard University. He is presently employed as Division Consulting Geologist for the Gulf Coast Division of Pan American Petroleum Corporation.

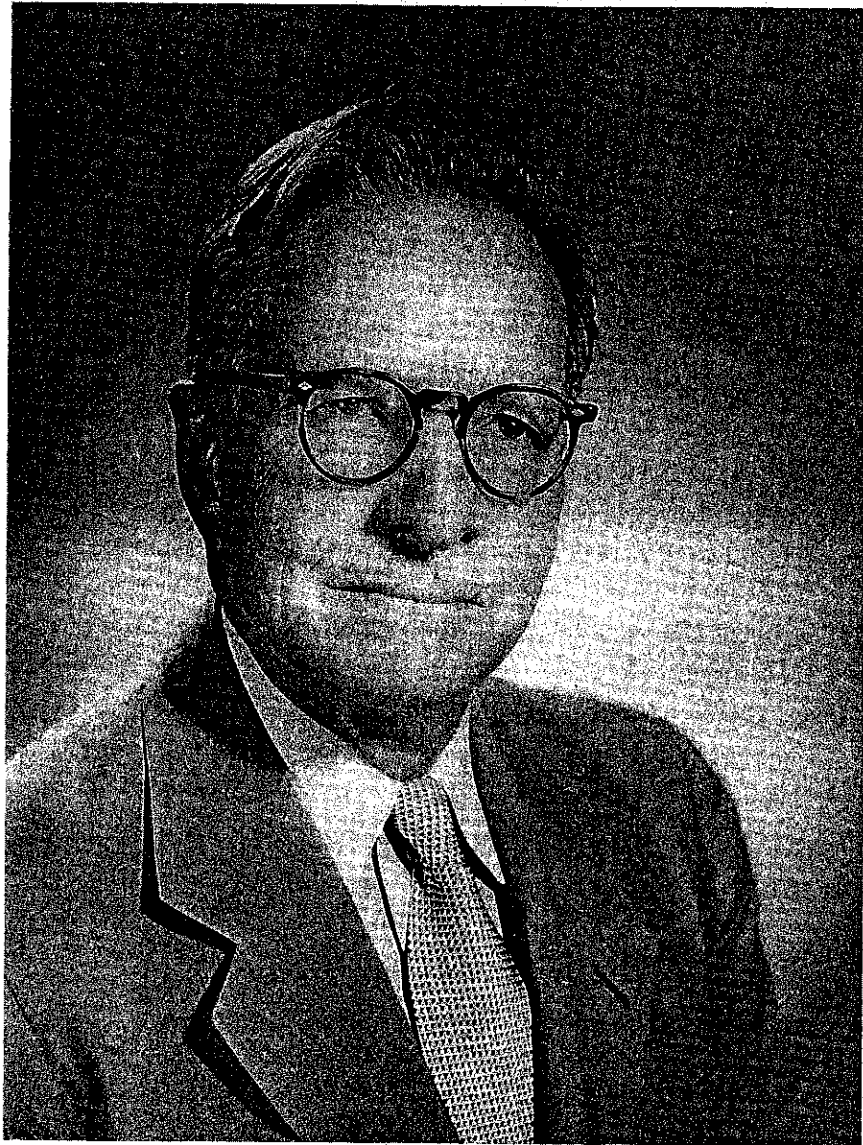


GERALD C. GLASER received his B.S. and M.S. in Geology at Tulane University and is now working on his PhD at the University of Oklahoma.

R. J. GRANBERRY graduated from Louisiana State University in Geology and is a District Manager for Core Lab in Lafayette, Louisiana.



In Memoriam



CLARENCE LEMUEL MOODY
(1889-1963)

TABLE OF CONTENTS

	Page
BEST PAPER AWARDS, 12th ANNUAL MEETING.....	II
OFFICERS AND REPRESENTATIVES, G. C. A. G. S.....	VI
OFFICERS OF G. C. A. G. S. MEMBER SOCIETIES	VII
COMMITTEES FOR THIRTEENTH ANNUAL MEETING.....	VIII
REPORT OF THE PRESIDENT, G. C. A. G. S., by J. C. Byrd.....	IX
REPORT OF THE ANNUAL MEETING CHAIRMAN, by H. J. Tyler	X
REPORT OF THE PRESIDENT, Gulf Coast Section, S.E.P.M., by A. D. Warren.....	XI
INDEX TO ADVERTISERS.....	XII

TECHNICAL PAPERS AND ABSTRACTS

STRATIGRAPHIC OIL—THE PROMISE OF THE FUTURE (Abstract), by Grover E. Murray.....	1
MODERN TOOLS FOR STRATIGRAPHIC EXPLORATION (Abstract), by W. J. Gillingham.....	2
COLGRADE FIELD—WINN PARISH, LA., by Robert E. Nelson	3
STRATIGRAPHIC FACTORS IN SOUTHWEST LOUISIANA OIL PROSPECTING, by Lafayette Geological Society Study Group.....	9
CONTINUOUS SEISMIC PROFILES OF A SHELF-EDGE BATHYMETRIC PROMINENCE IN NORTHERN GULF OF MEXICO, by R. K. Matthews.....	49
STRATIGRAPHIC PROSPECTS OF THE NUEVO LEON AND TRINITY GROUPS, SAN MARCOS ARCH, TEXAS, by John S. Rives.....	59
TYPICAL STRATIGRAPHIC TRAPS, JACKSON TREND OF SOUTH TEXAS, by Thomas S. West, Sr.....	67
THE ENVIRONMENTAL CONTROL OF OIL AND GAS OCCURRENCE IN TERRIGENOUS CLASTIC ROCKS, by E. H. Rainwater.....	79
BIRTH AND DEATH OF AN OFFSHORE BAR, by Sankey L. Blanton	95
THE SOUTHEASTERN ALABAMA BROWN ORE DISTRICT (Abstract), by W. Everett Smith.....	98
A METHOD OF RAPIDLY CONVERTING MEASURED DEPTHS IN DIRECTIONALLY DRILLED WELLS TO THEIR SUBSEA EQUIVALENTS, by B. E. Van Arsdale, Jr.	99
BASAL TUSCALOOSA SEDIMENTS, EAST-CENTRAL LOUISIANA (Abstract), by Harry V. Spooner, Jr.....	102
AGE OF GROWTH FAULTING IN SOUTHEAST LOUISIANA, by Carl E. Thorsen.....	103
SIMSBORO AND ADJACENT FORMATIONS BETWEEN BRAZOS AND TRINITY RIVERS, TEXAS LITHOLOGY AND CLAY MINERALOGY, by Donald W. Kohls	111
QUANTITATIVE ANALYSIS OF A PROSPECT TO DETERMINE WHETHER IT IS DRILLABLE (Abstract), by Vito A. Gotautas	118
CYCLIC SEDIMENTATION IN THE MISSISSIPPI RIVER DELTAIC PLAIN (Abstract), by James M. Coleman and Sherwood M. Gagliano.....	119
SPECIES CONCEPTS AND FORAMINIFERA, by E. Ann Butler	121
RECENT AND ANCIENT BEACH AND BAR DEPOSITS (Abstract), by R. C. Ohnoutka.....	126
FRACTURED CHALK OIL RESERVOIRS, SABINE PARISH, LOUISIANA, by Dalton J. Woods.....	127

	Page
A NUMERICAL INDEX FOR BIOSTRATIGRAPHIC ZONATION IN THE MID-TERTIARY OF THE EASTERN GULF, by Alan H. Cheetham and Phil B. Deboo	139
SMACKOVER PROSPECTS IN EAST TEXAS (Abstract), by Vernon Peppard.....	148
STRATIGRAPHIC TRAPS IN SOUTHEASTERN LOUISIANA, by The New Orleans Geological Society Study Group	149
EXPLORATION TRENDS MESOZOIC NORTHEAST TEXAS (Abstract), by R. W. Eaton.....	175
A STRATIGRAPHIC AND STRUCTURAL ANALYSIS OF THE LAURAL RIDGE FIELD, IBERVILLE AND ASCENSION PARISHES, LOUISIANA (Abstract), by A. L. Morgan, III and R. G. Voelker.....	176
SIGNIFICANT NORTH LOUISIANA COTTON VALLEY STRATIGRAPHIC TRAPS, by Barney F. Pate.....	177

GULF COAST ASSOCIATION OF GEOLOGICAL SOCIETIES

1963

PRESIDENT.....J. C. Byrd—Jones-O'Brien
Shreveport Geological Society

PAST PRESIDENT.....T. H. Philpott—Nilo Oil Co.
New Orleans Geological Society

VICE-PRESIDENT.....Earl Knott—Tenneco Oil Co.
Corpus Christi Geological Society

SECRETARY.....William E. Bancroft—Texas Eastern Transmission Corp.
Shreveport Geological Society

TREASURER.....Robert E. Rogers—Skelly Oil Co.
Shreveport Geological Society

EXECUTIVE COMMITTEE

George A. McCalpin	Representative	Sun Oil Co.
C. E. Buck	Representative	Beaumont Geological Society
George Burton	Representative	Humble Oil & Refg. Co.
A. D. Warren	Representative	Corpus Christi Geological Society
John Van Fossen	Representative	Sun Oil Co.
R. B. Ross	Representative	East Texas Geological Society
Jules Braunstein	Representative	Mobil Oil Co.
George B. Hickok	Representative	Houston Geological Society
Nevin D. Hoy	Representative	Kewanee Oil Co.
Don L. Mount	Representative	Lafayette Geological Society
		Independent
		Mississippi Geological Society
		Shell Oil Co.
		New Orleans Geological Society
		Humble Oil & Refg. Co.
		Shreveport Geological Society
		U.S.G.S.
		Southeastern Geological Society
		Tectonic Oil Co.
		South Texas Geological Society

EDITORS

George B. Hickok	Humble Oil & Refining Co.	Shreveport Geological Society
Prentis L. Boatner, Jr.	Humble Oil & Refining Co.	Shreveport Geological Society

ASSOCIATE EDITORS

C. W. Holcomb	Humble Oil & Refining Co.	Corpus Christi Geological Society
Jack W. Trantham	Consultant	East Texas Geological Society
William R. Higgs	Louisiana Polytechnic Institute	Gulf Coast Section, S.E.P.M.
George C. Hardin, Jr.	Consultant	Houston Geological Society
Jack P. Martin	Consultant	Lafayette Geological Society
Robert T. Violette	Pan American Petroleum Corp.	Mississippi Geological Society
B. E. Van Arsdale, Jr.	The Superior Oil Co.	New Orleans Geological Society
Roy H. Guess	Newman Bros. Drlg. Co.	South Texas Geological Society
Ragan Tucker	A. J. Hodges Industries	Shreveport Geological Society

ADVERTISING MANAGER

Wayne H. Mack	Mobil Oil Company	Shreveport Geological Society
---------------	-------------------	-------------------------------

ASSISTANT ADVERTISING MANAGER

A. B. Long	Sun Oil Company	Beaumont Geological Society
John C. Olney	Hycalog, Inc.	Corpus Christi Geological Society
Kindell McNeill	Pan American Petroleum Corp.	East Texas Geological Society
Richard Winborn	North Central Oil Corp.	Houston Geological Society
John Dillon	Austral Oil Company	Lafayette Geological Society
Charles Bush	Schlumberger Well Surveying Corp.	Mississippi Geological Society
Dale Roberts	Independent	New Orleans Geological Society
Kinney Brookings	Brookings, Moffatt & Waddle	Shreveport Geological Society
Jack G. Fischer	Texaco, Inc.	South Texas Geological Society

OFFICERS OF MEMBER SOCIETIES OF GULF COAST ASSOCIATION OF GEOLOGICAL SOCIETIES

BEAUMONT GEOLOGICAL SOCIETY, P. O. Box 5467, Beaumont, Texas

PRESIDENT.....H. Carter Robinson—Schlumberger Well Surveying Corp.
 VICE PRESIDENT.....Donald C. Keen—Sun Oil Company
 SECRETARY.....William R. Perkins—Sun Oil Company
 TREASURER.....F. G. B. Jenkins—Gulf Oil Corp.

CORPUS CHRISTI GEOLOGICAL SOCIETY, P. O. Box 1068, Corpus Christi, Texas

PRESIDENT.....L. Joe Sockwell—Sun Oil Company
 1st VICE PRESIDENT.....Dan A. Pedrotti—Texaco, Inc.
 2nd VICE PRESIDENT.....David S. Sheridan—Texaco, Inc.
 SECRETARY.....Donald I. Rothschild—Shell Oil Company
 TREASURER.....Byron F. Dyer—Texas Eastern Transmission Corp.

EAST TEXAS GEOLOGICAL SOCIETY, P. O. Box 1087, Tyler, Texas

PRESIDENT.....C. Alex Harvey—Independent Geologist
 VICE PRESIDENT.....A. Harry Nixon—Union Producing Co.
 SECRETARY.....Harry L. Gearhart—Lone Star Producing Co.
 TREASURER.....John M. Ewing—Atlantic Refining Co.

HOUSTON GEOLOGICAL SOCIETY, 234 Esperson Bldg., Houston, Texas

PRESIDENT.....Orville G. Lundstrom—R. H. Goodrich Estate
 1st VICE PRESIDENT.....Arthur S. Dickinson—Monsanto Chemical Co., Hydrocarbon Division
 2nd VICE PRESIDENT.....Charles W. Stuckey, Jr.—Union Oil Co. of California
 SECRETARY.....Frank R. Hardin—Independent
 TREASURER.....H. Grady Traylor—Cyprus Oil Company

LAFAYETTE GEOLOGICAL SOCIETY, P. O. Box 1896 O.C.S., Lafayette, Louisiana

PRESIDENT.....Marvin Munchrath—Midwest Oil Corp.
 VICE PRESIDENT.....E. Holmes Smart, Jr.—Zinn Petroleum Co.
 SECRETARY.....Allen M. Borland—Sun Oil Company
 TREASURER.....John Schoelen—Texas Eastern Transmission Corp.

NEW ORLEANS GEOLOGICAL SOCIETY, P. O. Box 52172, New Orleans, Louisiana

PRESIDENT.....Donald I. Andrews—An Son Petroleum Corp.
 VICE PRESIDENT.....Jack C. Stipe—Kerr-McGee Oil Industries, Inc.
 SECRETARY.....Dwight L. McCray—Analab Inc.
 TREASURER.....J. A. Gilreath—Schlumberger Well Surveying Corp.

SHREVEPORT GEOLOGICAL SOCIETY, P. O. Box 750, Shreveport, Louisiana

PRESIDENT.....Lloyd Waldron—Independent
 1st VICE PRESIDENT.....Robert E. Rogers—Skelly Oil Company
 2nd VICE PRESIDENT.....Jimmie C. Smith—Phillips Petroleum Co.
 SECRETARY.....Gene Sigler—Sunray-DX Oil Co.
 TREASURER.....Gene Robinson—Union Producing Co.

SOUTHEASTERN GEOLOGICAL SOCIETY, P. O. Box 1634, Tallahassee, Florida

PRESIDENT.....Frank Andrews—Independent
 VICE PRESIDENT.....Howard R. Cramer—Emory University, Atlanta, Georgia
 SECRETARY.....George Aase—Independent
 TREASURER.....George Aase—Independent

SOUTH TEXAS GEOLOGICAL SOCIETY, Milam Building, San Antonio, Texas

PRESIDENT.....Robert L. Begeman—Independent Geologist
 VICE PRESIDENT.....A. Wayne Wood—Blanco Oil Co.
 SECRETARY.....Eugene L. Ames, Jr.—Gilcrease Oper. Co.
 TREASURER.....John L. Douglas—Independent Geologist

MISSISSIPPI GEOLOGICAL SOCIETY, P. O. Box 422, Jackson, Mississippi

PRESIDENT.....W. A. Skees—Pan American Petroleum Corp.
 VICE PRESIDENT.....M. L. Oxley—Lone Star Producing Co.
 SECRETARY.....D. C. Gifford—Marr Company
 TREASURER.....H. E. Karges—Independent Geologist

THIRTEENTH ANNUAL MEETING COMMITTEES

GENERAL CHAIRMAN.....Henry J. Tyler.....Phillips Petroleum Company

PROGRAM

George B. Hickok, Co-Chairman.....Humble Oil & Refining Company
Prentis L. Boatner, Jr., Co-Chairman.....Humble Oil & Refining Company

EDITORS

George B. Hickok.....Humble Oil & Refining Company
Prentis L. Boatner, Jr.....Humble Oil & Refining Company

ADVERTISING

Wayne H. Mack.....Mobil Oil Company

ENTERTAINMENT

Joe A. Williams.....Schlumberger Well Surveying Corp.

EXHIBITS

K. A. Snow, Chairman.....Marathon Oil Company
L. F. Jenkinson.....Marathon Oil Company

FINANCE

Robert E. Rogers.....Skelly Oil Company

HOUSING

M. W. Beckman, Chairman.....Consultant
W. J. Thompson.....Continental Oil Company

PUBLICITY

T. E. Godfrey.....U.S.G.S.

REGISTRATION

C. G. Giffin, Chairman.....Schlumberger Well Surveying Corp.
C. Dan Brown.....Placid Oil Company
A. E. Blanton.....Sun Oil Company
T. N. Vague.....M. E. Pollard Investments

SOUND AND PROJECTION

Nolan Shaw, Chairman.....Centenary College
Walter L. Erwin.....Sun Oil Company

GOLF TOURNAMENT

George Palmer.....Butler-Johnson Drilling Company

TRANSPORTATION

James B. Gibson, Chairman.....Arkansas-Louisiana Gas Company
Hoyt Mann.....Lane Wells
Milton Farmer.....Sun Oil Company

AWARDS

James C. Hollingsworth, Chairman.....Nilo Oil Company
Shreveport Geological Society
Allen Borland.....Sun Oil Company
Lafayette Geological Society
Joseph T. Carlisle.....Phillips Petroleum Company
Shreveport Geological Society
Richard H. Forgey.....McAlester Fuel Company
East Texas Geological Society
Fred Jenkins.....Gulf Oil Corporation
Beaumont Geological Society
Edward B. Launius.....Independent
Mississippi Geological Society
Wallace Mann.....Humble Oil & Refining Company
New Orleans Geological Society
R. S. Parratt.....Texas Gas Exploration Company
Houston Geological Society
Stanley L. Perkins.....Continental Oil Company
Corpus Christi Geological Society
Richard Shive.....Humble Oil & Refining Company
New Orleans Geological Society

WOMEN'S ACTIVITIES

Mrs. R. J. Moffatt, Co-Chairman Mrs. R. H. Alagood, Advisor Mrs. Robert F. Cashen Mrs. Robert Rogers
Mrs. H. N. K. Brookings, Co-Chairman Mrs. Thomas N. Vauge Mrs. Charles Bragg Mrs. R. E. O'Brien
Mrs. Charles F. McDuff, Advisor Mrs. Frank D. Graves Mrs. W. W. Bynum Mrs. Charles Giffin

**GULF COAST ASSOCIATION OF GEOLOGICAL SOCIETIES
REPORT OF THE PRESIDENT
1963**

The Gulf Coast Association of Geological Societies is celebrating its thirteenth anniversary this year with its annual convention being held in Shreveport, Louisiana. It is also the fifth year in a row in which the Gulf Coast Association of Geological Societies Convention has been designated as a regional meeting of the American Association of Petroleum Geologists.

The title "Stratigraphic Oil—The Promise of the Future" was appropriately selected as the central theme for our Convention Program. Everyone recognizes the significance stratigraphic traps play in the exploration for oil and gas in the Gulf Coast Area. With this in mind, your Convention Committeemen are to be commended for the excellent symposium papers and studies selected along this theme and for their timely geological contributions to Gulf Coast Geology.

The "Transactions" this year has been dedicated to the memory of Mr. C. L. Moody, a pioneer and ardent supporter of the Gulf Coast Association of Geological Societies.

Mr. "Bob" Rogers, Treasurer of the G.C.A.G.S., will report on the financial status of the G.C.A.G.S. at the Convention.

Many problems confront our organization from year to year. One of vital importance to us at this time is the matter of incorporation. A special committee composed of Br. Bob Rogers, Chairman, Mr. Sarl Knott and Mr. Bill Bancroft, all members of the Executive Committee, was appointed to study this question and make its recommendation to the Executive Committee before Convention time. The decision of the Executive Committee concerning incorporating the G.C.A.G.S. will be announced at the Convention.

I would like to personally thank each and every one of you concerned with the Convention for the tremendous amount of effort and work put forth to insure the success of the Thirteenth Annual Convention of the G.C.A.G.S., the first one held in Shreveport in ten years.

It has indeed been an honor and a pleasure to have served as your President this year.

J. C. BYRD

GULF COAST ASSOCIATION OF GEOLOGICAL SOCIETIES

REPORT OF THE GENERAL CHAIRMAN

The General Chairman is given the responsibility for staging the Convention and all of the related activities. While at first this generally appears to be an insurmountable job, with the aid of a number of dedicated individuals, the Convention is held and with each succeeding year seems to run more smoothly. The last Gulf Coast Association meeting held in Shreveport was the third annual Convention held in 1953, and since the association had been in existence such a short time, the 1953 meeting possibly left a little to be desired. The 1963 Shreveport group were determined that this Convention would be well organized and a credit to the Shreveport Geological Society and a credit to the City of Shreveport.

When the theme was picked for this meeting, the theme "Stratigraphic Oil, the Promise of the Future" was chosen, with the knowledge that much of our domestic exploration of the future will be for stratigraphic production. Our Joint Program Chairmen have advised me that a number of representatives of different societies have indicated that various Society Members were not allowed to work on these programs by their individual companies, since the individual companies were doing specialized research in stratigraphic fields. It was felt that by the Society Study Group Method a paper could be put out in each society listing the various types of stratigraphic production for that general area and generalized stratigraphic potential and on that basis the theme would not infringe too much on company individual research programs. We are most pleased with the series of papers which have been furnished the Program Chairman and Editor and are included in the transactions. We especially wish to commend the New Orleans and Lafayette Study Groups for their study group papers. We consider that the 1963 program will give each serious attendant something to think about and conceivably new techniques to apply.

For the first time, the advertising will be distributed through the book rather than in the back of the transactions volume. In part, by virtue of this difference from the normal manner of publication, the advertising committee have sold over \$9,000.00 worth of advertising. We ask that you inspect the present transactions and instruct your representative to the Gulf Coast Association as to your feelings in this matter. One representative representing one society objected to this method of distributing the advertising through the book and if enough society representatives find it seriously objectionable, it will become a matter to be voted on at future Executive Committee Meetings. We of Shreveport do not consider it objectionable and it certainly sold more advertising.

The Treasurer of the Association will make certain reports to the Convention regarding the classification of the association as a non-profit institution by the Bureau of Internal Revenue. This determination of non-profit status is one of our more important problems and the Executive Committee of the association will have certain duties to perform in causing the association to be declared a non-profit institution.

The Convention Chairman is appointed by the Host Society each year, one year plus in advance of the annual convention. He in turn appoints various Chairmen to handle the necessary functions. In other places in this volume and in the program for the meeting you will note the detailed list of Chairmen for the various activities. I would like to make the association aware of how fortunate we were to have the Chairmen who have worked on this meeting. Each of the gentlemen and ladies whom you find listed have accepted their part in the staging of this affair and have devoted considerable of their time to the details on their part of this function. As previous Convention Chairmen have noticed, invariably we find a host of willing workers who accept the responsibility for doing a part of these meetings. We were fortunate in Shreveport in setting up a smooth running organization of willing people and we feel their work will be shown in the manner in which this Convention will function.

This 1963 transaction book is a further excellent addition to the library of geological knowledge affecting the Gulf Coast and in common with the twelve previous transaction books represents a wealth of geological data which will aid in the finding of new sizeable reserves in the Gulf Coast province.

H. J. TYLER

OFFICERS OF GULF COAST SECTION

SOCIETY OF ECONOMIC PALEONTOLOGISTS AND MINERALOGISTS

PRESIDENT.....	A. D. Warren, Mobil Oil Company, Bellaire, Texas
PAST PRESIDENT.....	H. V. Andersen, Louisiana State University, Baton Rouge, Louisiana
VICE PRESIDENT.....	E. H. Horton, Amerada Petroleum Corporation, Houston, Texas
SECRETARY.....	B. S. Parrott, Shell Oil Company, New Orleans, Louisiana
TREASURER.....	H. H. Phillips, Pan American Petroleum Corporation, Houston, Texas
EDITOR.....	W. R. Higgs, Louisiana Polytechnic Institute, Ruston, Louisiana

BUSINESS REPRESENTATIVES

GULF COAST SECTION OF S.E.P.M.

Emmett R. Adams.....	Jackson, Mississippi	Paul H. Nichols.....	Tyler, Texas
Harold K. Brooks.....	Gainesville, Florida	William R. Paine.....	Lafayette, Louisiana
E. Ann Butler.....	Baton Rouge, Louisiana	S. F. Percival.....	Dallas, Texas
H. E. Eveland.....	Beaumont, Texas	B. J. Petrusek.....	New Orleans, Louisiana
W. J. Huff.....	Hattiesburg, Mississippi	Fred E. Smith.....	College Station, Texas
Douglas E. Jones.....	University, Alabama	N. J. Tarramella.....	Corpus Christi, Texas
John E. Kilgore.....	Houston, Texas	S. R. Windham.....	Tallahassee, Florida
Sybil Lightfoot.....	San Antonio, Texas	Keith P. Young.....	Austin, Texas

REPORT OF THE PRESIDENT

1963

The Gulf Coast Section of the Society of Economic Paleontologists and Mineralogists has completed its tenth year. During this decade, there has been continuous close cooperation between the Section and the Gulf Coast Association of Geological Societies, particularly as regards the annual G.C.A.G.S. convention. Members of the Gulf Coast Section have presented the sixty-eight papers at these meetings from 1954 through 1962. There is no doubt that such a mutually satisfactory relationship between these two groups shall continue to flourish.

During the past year, members of the Gulf Coast Section have actively participated in both affairs and administration of the national S.E.P.M., the A.A.P.G., and other national and local societies. This participation involved more of our members and their time than in other years due to the fact that both the A.A.P.G.-S.E.P.M. and the Geological Society of America held their annual meetings in the Gulf Coast.

Membership in our section at this writing stands at 236 active and associate members. This represents a decrease in membership compared to 1962. It would appear that only a very aggressive membership drive can bring our total of members up to the peak of 302 attained in 1960.

Type Locality Unit III is being edited and should be released sometime this year. Meanwhile, tentative plans have been initiated so the the Gulf Coast Section may sponsor one or more field trips to be held in conjunction with the A.A.P.G.-S.E.P.M. annual meeting which is to convene in New Orleans in 1965.

I would like to express my great appreciation to the members of our Council, our Editor, our business representatives, and those who have served in other capacities whose efforts have done so much to make this year a successful one for the Gulf Coast Section.

A. D. Warren

INDEX TO ADVERTISERS

Acme Map Company	A 24	Louisiana Land and Exploration Company	A 6
Ada Oil Company	A 37	Lyons Petroleum	A 6
Joseph L. Adler.....	A 8	Mandrel Industries, Inc.	A 43
Mr. R. H. Alagood	A 8	Marlin Exploration, Inc.	A 19
Alamo Gas Supply Company	A 13	Marr Company	A 4
Alexander and Norman	A 40	Martin and Harrison	A 43
American Photocopy and Log Service	A 40	Geo. N. May and Assoc.	A 28
An-Son Corporation	A 37	D. R. McCord and Associates, Inc.	A 24
Apache Exploration Co., Inc.	A 39	McCullough Tool Company	A 23
Arkansas Louisiana Gas Company	A 17	McGoldrick and Watson Drilling Company	A 18
Atwater, Cowan and Associates	A 8	T. W. McGuire and Associates	A 4
Austral Oil Co., Inc	A 31	C. M. McLean	A 38
Aztec Oil and Gas Company	A 20	John W. Mecom	A 38
Pernie Bailey	A 45	L. H. Meltzer	A 38
The Ballard and Cordell Corp.	A 30	The Merchants National Bank of Mobile	A 23
Barnwell Drilling Co.	A 28	Murco Drilling Corporation	A 22
Baroid Division National Lead Company	A 17	Midwest Oil Corp.	A 32
E. J. Barragy	A 38	The Mississippi Geological Society	XVIII
Fred W. Bates and Assoc.	A 43	R. B. Mitchell	A 12
M. L. Bath Company	A 18	Mokeen Oil Co.	A 8
Bayou Reproductions	A 28	Monarch Logging Company, Inc.	A 4
Bayou State Oil Corp.	A 47	Montgomery's Stratigraphic Service	A 13
Bexar County National Bank of San Antonio	A 20	Moran Tank Company	A 40
T. V. Bills	A 32	George A. Musselman	A 17
Blanco Oil Company	A 32	John C. Myers	A 33
Leslie Bowling	A 6	National Geophysical Co., Inc.	A 31
Bradco Oil and Gas Co.	A 46	New Orleans Geological Society	XVII
Brewer and Company	A 32	North Central Oil Corp.	A 36
Brookings, Moffatt and Waddle	A 22	Ocean Drilling and Exploration Co.	A 39
Butler-Johnson, Inc.	A 13	Mr. Edwin P. Ogier	A 18
B. G. Byars	A 18	Oil Royalties, Inc.	A 42
Caddo Office Supplies, Inc.	A 24	Owen Drilling Co.	A 32
Caddo Oil Company, Inc.	A 18	Pan Geo Atlas Corporation	A 41
Ralph B. Cantrell	A 33	G. L. Paret and G. L. Paret, Jr.	A 12
Shreveport Hotel Group	A 26	Petroleum Well Logging Service	A 17
Chapman, Inc.	A 28	Robert C. Pettit	A 40
Christensen-Diamond Products Company	A 10	Petty Geophysical Engineering Co.	A 7
Cities Service Oil Company	A 11	Phillips Petroleum Company	A 6
Dan L. Clark Drilling Company, Inc.	A 4	Pioneer Bank and Trust Co.	A 12
George H. Clark	A 38	M. E. Pyle	A 32
George H. Coates, Company	A 11	Rebel Technical Service	A 46
Mr. Jack Colle	A 46	C. B. Reed and Associates	A 27
Commercial National Bank	A 15	Raymond D. Reynolds	A 47
Core Laboratories, Inc.	A 16	L. L. Ridgway	Outside Back Cover
Coulston Drilling Company	A 44	Rig Time, Inc.	Inside Back Cover
John Cowan, Surveyor	A 24	Rinehart Oil News Co.	A 8
Crow Drilling and Producing Company	A 44	J. I. Roberts Drilling Co.	A 45
Milton Crow, Inc.	A 22	Rodgers, Seglund and Shaw, Associates	A 18
Delta Drilling Co.	A 36	Ross Production Company	A 18
J. H. Dismukes	A 40	Sabine Royalty Corporation	A 22
Electrical Log Services, Inc.	A 14	C. H. Sample	A 30
Tatham R. Eskrigge	A 18	Mr. Erwin W. Saye	A 20
Evangeline Seismic Company	A 47	Sidney Schafer and Associates, Inc.	A 2
Robert P. Evans	A 32	Schlumberger Well Surveying Corp.	A 35
Exploration Surveys, Inc.	A 29	Wm. C. Schmitz	A 43
F. and A. Map Co., Inc.	A 8	Scurlock Oil Co.	A 47
Paul Farren	A 44	Seismograph Service Corp.	A 34
First National Bank	A 33	Service Photocopy Co.	A 45
Forney and Worrel	A 13	Shell Oil Co.	A 39
John Franks	A 20	Shreveport Geological Society	XV
X. M. Frascogna	A 8	Shreveport Oil Scouts Association	A 22
Bert E. Gamble	A 19	Sklar and Phillips, Inc.	A 36
Geophysical Service, Inc.	Inside Front Cover	Smith Operating and Management Co., Inc.	A 32
Globe Drilling Company	A 46	Smyrl Drilling Company	A 37
Greer's Reproduction	A 33	James E. Smyth	A 42
H. J. Gruy and Associates, Inc.	A 13	William H. Spice, Jr.	A 8
Michel T. Halbouty	A 38	D. C. Stallworth, Inc.	A 39
Temple Hargrove	A 44	Stratigraphic Traps Research Corporation	A 24
R. Merrill Harris	A 12	Adam Sturlese	A 30
Robert W. Harrison and Company	A 37	Superior Iron Works and Supply Co.	A 39
William G. Helis	A 15	A. T. Teague, Jr.	A 23
Hooks Exploration Company	A 43	Texas National Bank	A 16
Houston Geological Society	XVI	Tidelands	A 25
Houston Oil Field Material Co., Inc.	A 42	J. C. Trahan	A 14
Hudnall, Pirtle and Townsend	A 24	Trowbridge Sample Service	A 19
Hunter, Leger and Tinker	A 42	United Gas	A 7
Hycalog, Inc. (Lafayette)	A 45	United Geophysical Corp.	A 3
Hycalog, Inc. (Shreveport)	A 31	Raleigh W. Upshaw	A 33
Independent Exploration Co.	A 45	D. D. Utterbach	A 12
Javelin Oil Company	A 42	Van Dyke Oil Company	A 14
A. T. Jergins and Sons, Ltd.	A 24	Waguespack Pratt, Inc.	A 13
Jones O'Brien, Inc.	A 22	J. C. Walter, Jr.	A 47
H. E. Karges	A 32	Wellcore Company	A 13
Lewis P. Kilbourne	A 24	Welex	A 30
P. G. Lake, Inc.	A 33	Western Geophysical Company	A 1
Lane-Wells Company	A 9	Whitney National Bank	A 5
Larco Drilling Corp.	A 16	Fred Wilson Drilling Company	A 19
D. C. Latimer	A 12	W. W. Wise Drilling Co.	A 30
E. Leitz, Inc.	A 21	Witt Oil Production, Inc.	A 12
Louisiana Bank and Trust Co.	A 44	Cy Young Letter and Mailing Service	A 47

TRANSACTIONS, VOLUMES I THROUGH XII
and
FIELD TRIP GUIDE BOOKS
of the
GULF COAST ASSOCIATION OF GEOLOGICAL SOCIETIES
are still available

*

TRANSACTIONS

1951 Volume 1 — New Orleans	\$3.50*
1952 Volume 2 — Corpus Christi	5.50
1953 Volume 3 — Shreveport	5.50
1954 Volume 4 — Houston	3.50
1955 Volume 5 — Biloxi	3.50
1956 Volume 6 — San Antonio	3.50
1957 Volume 7 — New Orleans	5.50
1958 Volume 8 — Corpus Christi	5.50
1959 Volume 9 — Houston	5.50
1960 Volume 10 — Biloxi	5.50
1961 Volume 11 — San Antonio	5.50
1962 Volume 12 — New Orleans	6.50

FIELD TRIP GUIDE BOOKS

1958 Sedimentology of South Texas	\$6.50
1959 Recent Sediments of the north-central Gulf Coastal Plain	4.50
1960 Upper Tertiary and Quaternary Stratigraphy of the Pascagoula Valley, Mississippi and Recent Coastal Sedimentation of the Mississippi Sound	2.00
1961 Southern Edwards Plateau	4.50
1962 Fault Map of South Louisiana, Edited by W. E. Wallace, Jr. (54" X 54")	6.75

Order from: Cambe Log Library, Inc., 718 Milam Street, Houston 2, Texas.

NOTE: All prices are postpaid. Add 2% sales tax on orders in the state of Texas. Make your check payable to Cambe Log Library, Inc., 718 Milam Street, Houston, Texas.

Inquire about special prices to universities, colleges, schools, libraries, etc.

*Effective January 1, 1964, an additional handling charge of 20c will apply to all above prices.

Fir
Sec
Ele
ina
ma
ish,

Gulf Coast Section *of* SEPM Publications

●

Gulf Coast Type Localities Descriptions, with stratigraphic sections and maps; reproduced by photo-offset, and punched for regular size loose-leaf notebook.

- Unit 1: 19 Localities (October, 1960)\$2.50
- Unit 2: 20 Localities (April, 1962) 2.50
- Unit 3: (Soon to be available)

Field Trip Guidebooks

- Oligocene and Eocene of Western Mississippi,
Central Louisiana and Eastern Texas; October, 1957 1.25
- Middle Eocene of Houston County, Texas; May, 1961 3.00
- Little Stave Creek and Salt Mountain Limestone;
Wilcox Eocene through Vicksburg Oligocene of
Southwestern Alabama; November, 1962 3.00

- Directory of Gulf Coast Micropaleontologists;
September, 1960 1.25
-

Order from:

CAMBE LOG LIBRARY

718 Milam Street
Houston, Texas 77002

(All prices postpaid. Please make checks payable to Cambe Log Library.)

SHREVEPORT GEOLOGICAL SOCIETY

P. O. Box 750
Shreveport, Louisiana 71102

PUBLICATIONS

FIELD TRIP GUIDE BOOKS

Interior Salt Domes and Tertiary Stratigraphy of North Louisiana, 20th Trip, 147 pp. (1960)	\$5.00
Cretaceous of Southwest Arkansas and Southeast Oklahoma, 21st Trip, with Selected Field Papers in South Arkansas and North Louisiana, 89 pp. (1961)	3.50

REFERENCE REPORTS ON OIL AND GAS FIELDS AND REGIONAL GEOLOGY OF NORTH LOUISIANA, SOUTH ARKANSAS, MISSISSIPPI AND ALABAMA

Volume II, 205 pp. (1947)	7.00
Volume III, No. 1, 42 pp. (1951)	2.00
Volume III, No. 2, 108 pp. (1953)	5.00
Volume IV, 204 pp. (1958)	5.00
Volume V, 202 pp. (1963) (New Publication)	7.00

OTHER PUBLICATIONS

Geological Map of Louisiana (blue line print), Scale: 1"—8 miles (1946)	5.00
Structural and stratigraphic cross sections of north Louisiana and south Arkansas (set of 8) with index map and geologic map of pre-Upper Cretaceous surface	3.50
Compilation of Producing Formations by Fields covering NE Tex., N. La., S. Ark, Miss. and Ala. (1951)	1.00
Upper Gulf Coast Correlation Chart	1.00
Penetration Charts and Reservoir Data Summary of Oil and Gas Fields in South Arkansas and North Louisiana, 11 sheets (1953)	4.00
Set of nine (9) maps and one cross-section depicting the "Regional Stratigraphic Analysis of the Cotton Valley Group of the Upper Gulf Coastal Plain" (1954)	6.00
Oil and Gas Producing Zones in the Wilcox (Eocene) of Central Louisiana, 23 pp. (1961)	3.00
Photo Directory of Shreveport Geological Society 1960-61	3.00
Photo Directory of Shreveport Geological Society 1961-62	3.00

Make Checks Payable To:

SHREVEPORT GEOLOGICAL SOCIETY
P. O. Box 750
Shreveport, Louisiana 71102

Houston Geological Society

1963-1964

President *Orville G. Lundstrom*
1st Vice President *Arthur S. Dickinson*
2nd Vice President *Charles W. Stuckey, Jr.*
Secretary *Frank R. Hardin*
Treasurer *H. Grady Traylor*



Recent Publications

1962	Typical Oil and Gas Fields of Southeast Texas.....	\$12.00 plus 75c postage
1962	Geology of the Gulf Coast and Central Texas, and Guidebook of Excursions, GSA Convention, 1962.....	5.00 plus 75c postage
1963	Stratigraphic Study, Pleistocene to Middle Eocene, Houston, Texas, Field Trip Guide, AAPG-SEG-SEPM Joint Convention, Conducted by the SEPM.....	3.00 plus 25c postage
*1961	Geology of Houston and Vicinity, Texas.....	2.00 plus 25c postage
1959	Frio Study Group Report, Frio Formation of the Upper Gulf Coast of Texas.....	3.00 plus 25c postage
1959	Highway 90 from Texas-Louisiana State line to Van Horn and Highway 80 from Van Horn to New Mexico-Texas State line, Geologic Strip Maps.....	2.75 postpaid

* This is an excellent reference book for High School and College students

Please make checks payable to:

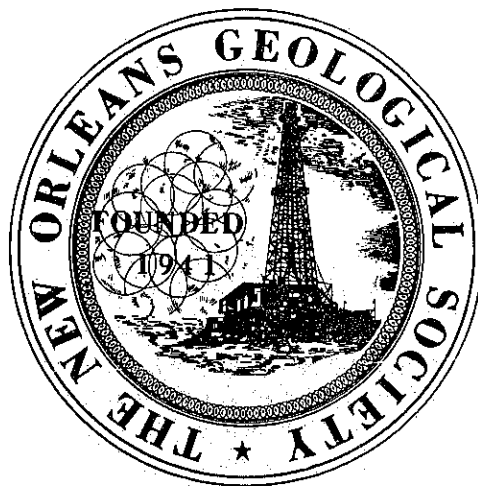
Houston Geological Society
234 Esperson Bldg.
Houston, Texas 77002

Complete publication lists will be furnished on request.

NEW ORLEANS GEOLOGICAL SOCIETY

1963-64

President: D. I. Andrews
Vice-President: J. C. Stipe
Secretary: D. L. McCray
Treasurer: A. T. Green



1963-64

Directors: L. H. Harvey
D. D. Wingfield
D. D. Utterback

PUBLICATIONS

- GEOLOGIC MAP OF LOUISIANA (In Preparation)\$ 5.00
A new revision, printed in colors, 1:500,000 Scale.
- ELECTRIC LOGS OF SOUTH LOUISIANA (Sept. 1962)\$ 6.00
A manual designed for geologists who are not specialists but who require a sound background in the response of electric logs to the many different chemical and physical conditions encountered within the zone of investigation of the electric log—Illustrated by approximately 75 electric logs, supplemented by micrologs, radioactivity logs, etc.
- SALT DOMES OF SOUTH LOUISIANA\$12.00
Revised Vol. I (Oct., 1963) Including Binder
- Vol. II (March, 1962)\$ 8.00
Maps and data on 119 of the salt domes of South Louisiana (including Off-shore), bound in an attractive vinylplastic loose-leaf binder.
- GUIDEBOOK—Fieldtrip—Peninsula of Yucatan, Mexico (Feb., 1962).....\$ 6.50
- REGIONAL CROSS SECTIONS, (Published 1954-1956). Total set of 8.....\$25.00
- DIRECTORY (1962-63)\$ 2.00
Members Names, Addresses and Business Affiliations

Orders may be mailed to:

NEW ORLEANS GEOLOGICAL SOCIETY

C/O BLAKEY'S LOG SERVICE
822½ Gravier Street
New Orleans 12, Louisiana

THE MISSISSIPPI GEOLOGICAL SOCIETY

Announces

MESOZOIC — PALEOZOIC

Producing Areas

of

Mississippi and Alabama

Vol. II

Includes field maps, type logs, brief discussion and listing of reservoir data for 55 oil and/or gas fields, discovered since 1957 (pub. date Vol. I) plus some older fields.

1. Vol. II Mesozoic-Paleozoic Producing Areas	Price	\$10.00
2. Automatic Distribution list for addenda, Groups of 5		2.50
3. Bargain! Vol. I (regular price \$12.50)	NOW	7.50
4. Better Bargain Vol. I and Vol. II		15.00

Send check or money order to:

MISSISSIPPI GEOLOGICAL SOCIETY

Post Office Box 681

Jackson, Mississippi

See our booth at the GCAGS Convention, Shreveport, Louisiana

GCAGS MEMBERS

Patronize Our Advertisers,
Sponsors and Contributors
Whose Help, Patronage,
and Contributions Have
Contributed to the Success
of Your Convention.
